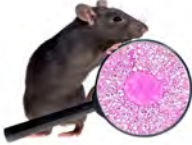
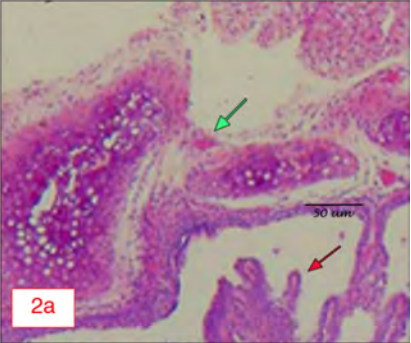


### Toxicologic Pathology Guidelines



*Beth Mahler*  
Toxicologic Pathology Illustrations Editor  
Experimental Pathology Laboratories, Inc.  
National Institute of Environmental Health Sciences  
Cellular and Molecular Pathology Branch  
Image Analysis Laboratory

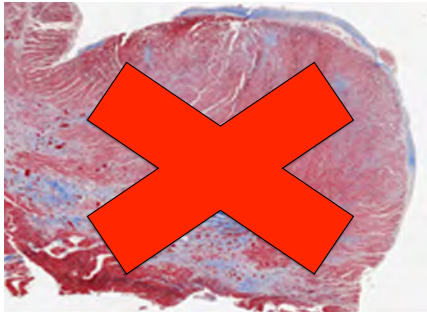
### What's wrong with this image?



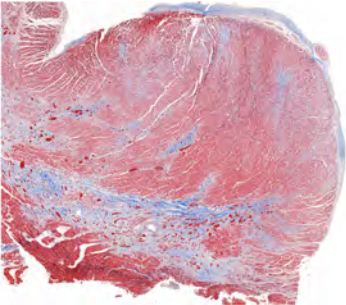
### Everything!



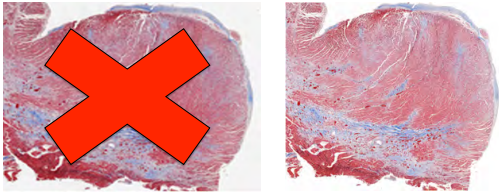
### No JPEG's



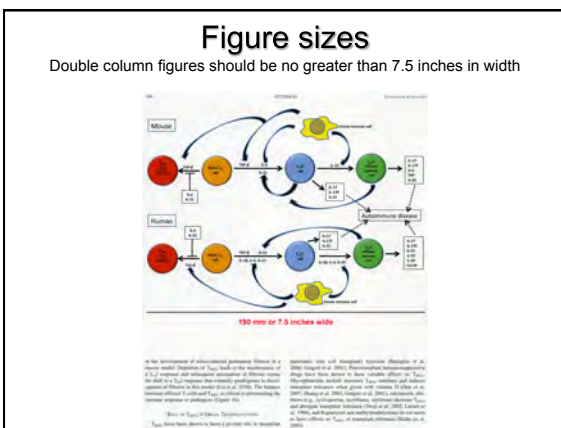
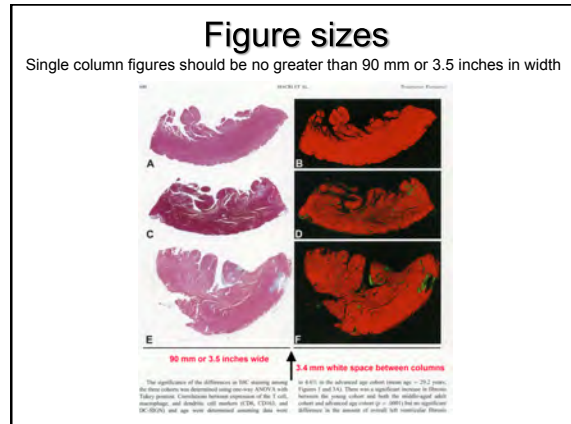
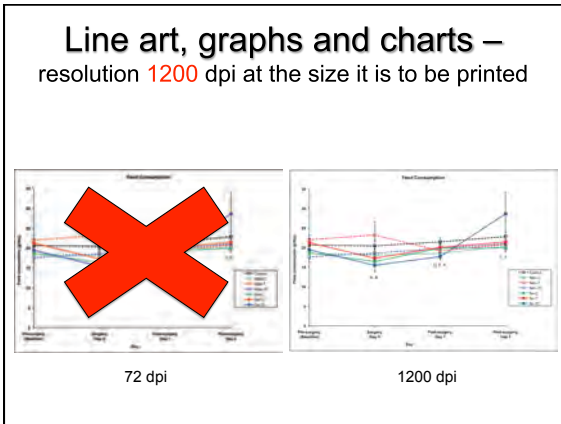
### Only high quality TIF, EPS or PSD files are acceptable



### Photomicrographs – resolution 300 dpi at the size it is to be printed

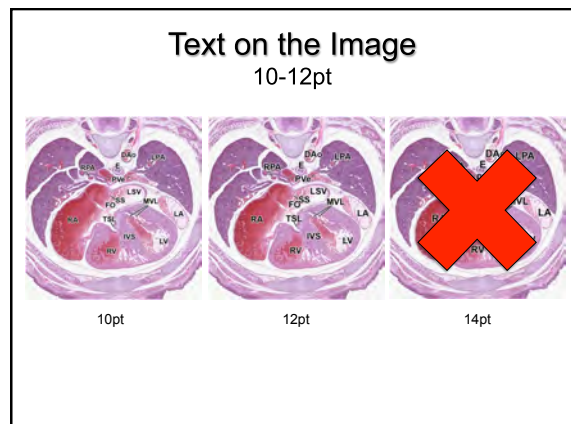
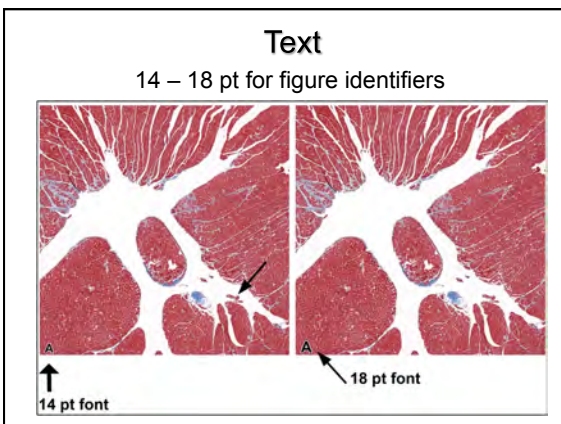


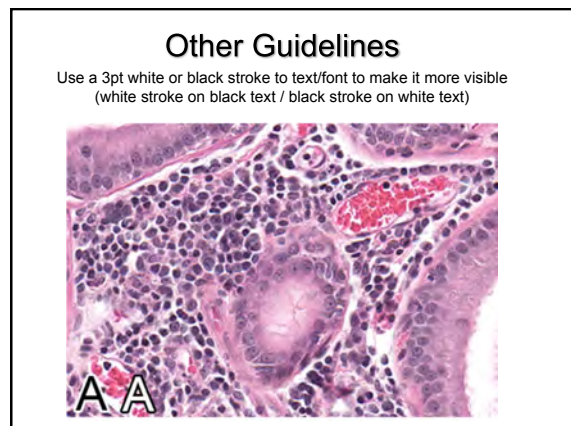
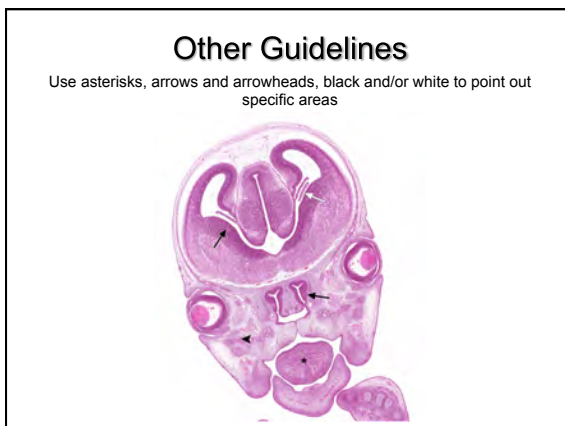
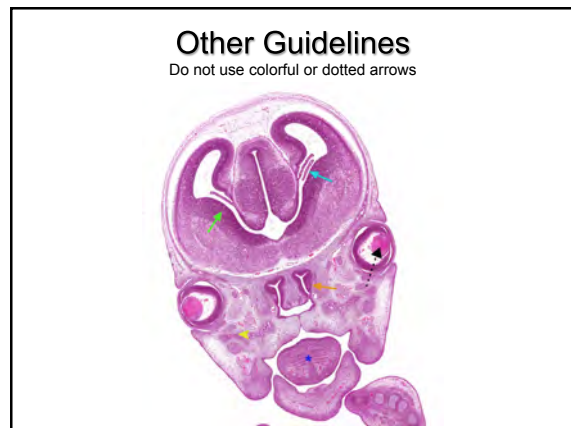
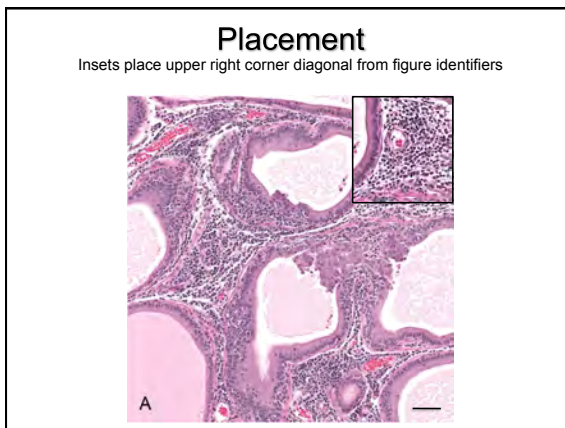
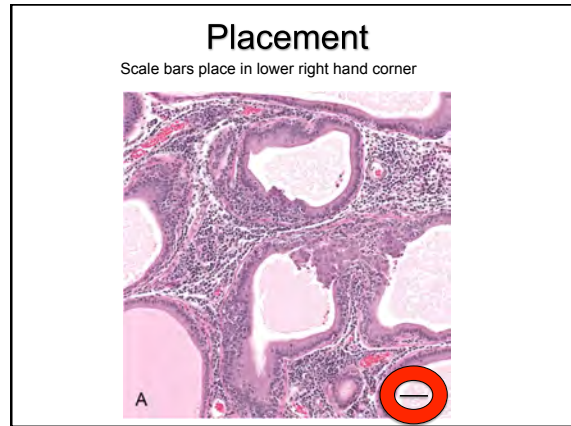
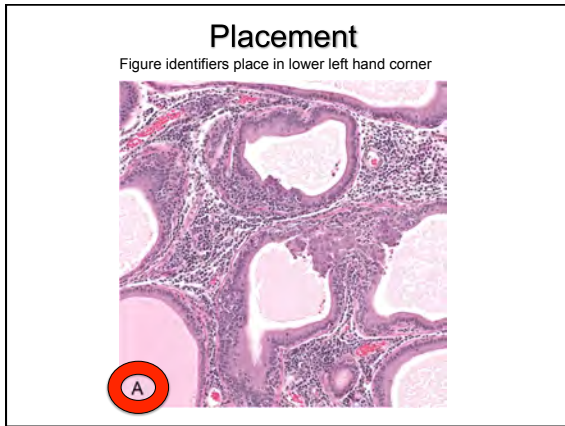
72 dpi                      300 dpi



### Preferable Fonts

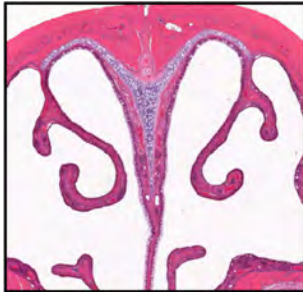
Arial or Helvetica





### Other Guidelines

No bounding boxes or outlines should be used on any image with one exception... an outline box around an inset on a photograph



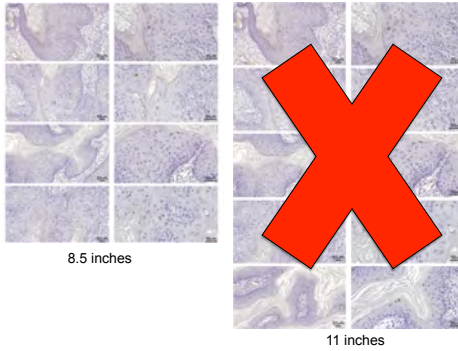
### Other Guidelines

Images should be cropped so no white borders surround the figure



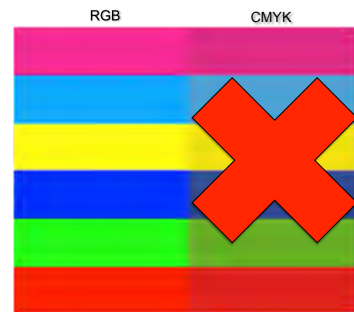
### Figure sizes

No figure or composite should exceed 190 mm or 8.5 inches in height



### Other Guidelines

All color figures should be submitted as RGB



### Other Guidelines

Help is available. Just ask.

Figures can be submitted individually and the illustrations editor will place into composites